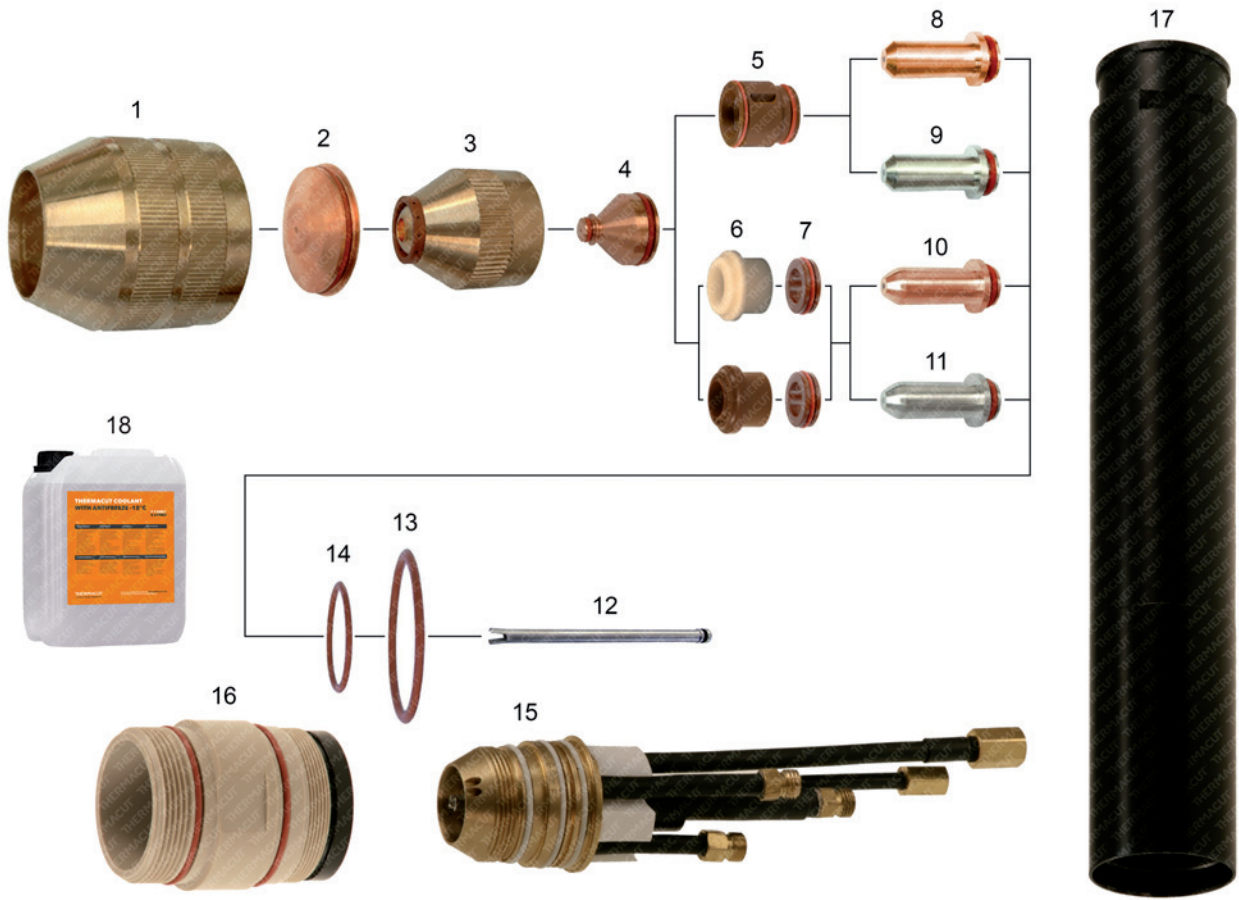


**THERMACUT® REPLACEMENT PARTS SUITABLE FOR  
KJELLBERG®  
HiFocus® 100  
PerCut® 100, PerCut® 101**



**Last update of this page: 11/11/2018. See Revision history for details.**

**THERMACUT®**  
THE CUTTING COMPANY

WWW.THERMACUT.CZ  
TEL.: +420 556 423 418  
SALES@THERMACUT.CZ

WWW.THERMACUT.DE  
TEL.: +49 (0) 27 39 40 33 0  
INFO@THERMACUT.DE

WWW.THERMACUT.COM  
TEL.: 1-603-542-6715  
CUSTOMERSERVICE@THERMACUT.COM

THERMACUT®, THE CUTTING COMPANY®, FHT-EX®, EX-TRAFIRE®, EX-TRACK®, EX-TRABEAM® AND EX-TRAFAME® ARE REGISTERED TRADEMARKS OF THERMACUT, K.S. AND MAY BE REGISTERED IN CZECH REPUBLIC AND/OR OTHER COUNTRIES. ALL OTHER TRADEMARKS ARE PROPERTIES OF THEIR RESPECTIVE OWNERS. THERMACUT IS NO WAY AFFILIATED WITH KJELLBERG®.  
MOST THERMACUT PARTS ARE MADE FOR OR BY AN IBG COMPANY. PARTS INDICATED WITH A OEM ARE ORIGINAL PARTS MANUFACTURED BY THE ABOVE NAMED MANUFACTURER AND ARE BEING RESOLD BY THERMACUT. THERMACUT RESERVES THE RIGHT TO SUBSTITUTE OEM PARTS IN PLACE OF THERMACUT PARTS.  
VALID FROM NOVEMBER 2020 • PREVIOUS VERSION IS NO LONGER VALID. • © COPYRIGHT 2020 BY THERMACUT® CZECH REPUBLIC. ALL RIGHTS RESERVED.

**THERMACUT® REPLACEMENT PARTS SUITABLE FOR  
KJELLBERG®  
HiFocus® 100  
PerCut® 100, PerCut® 101**

Item	Part No.	Ref. No.	Sh.Ref.No.	Description	Std. Pkg.	Item	Part No.	Ref. No.	Sh.Ref.No.	Description	Std. Pkg.
1.	T-8630	11.835.201.081	Z501	Protection Cap	1	7.	T-8655	11.835.421.303	Z111A	Spacer	2
2.	T-8631	11.835.201.1561	Z4015	Swirl Gas Cap 1.5	10	8.	T-8624	11.835.221.3101	Z002Cu	Cathode, XL, O <sub>2</sub> , Copper (I)	5
	T-8632	11.835.201.1571	Z4020	Swirl Gas Cap 2.0	10	9.	T-4922	11.835.221.3101-AG	Z002	Cathode, XL, O <sub>2</sub> , SilverEX-®	5
	T-8633	11.835.201.1581	Z4025	Swirl Gas Cap 2.5	10	10.	T-8653	11.835.421.3101-PRO	Z012Cu	Cathode, XL, O <sub>2</sub> , Silver PRO	5
	T-8634	11.835.201.1591	Z4030	Swirl Gas Cap 3.0	10	11.	T-4923	11.835.421.3101-AG	Z012	Cathode, XL, O <sub>2</sub> , SilverEX-®	5
	T-8650	11.835.401.1571	Z4140	Swirl Gas Cap 4.0	10	NS	T-10196	11.835.211.5101 OEM	Z042	Cathode, HiFinox™	5
	T-9928	11.835.411.1581	Z4530	Swirl Gas Cap 3.0	10	NS	T-10053	11.835.411.5101 OEM	Z052	Cathode, HiFinox™	5
	T-9929	11.835.411.1591	Z4540	Swirl Gas Cap 4.0	10	12.	T-8638	11.835.201.152	Z901	Cooling Tube	1
	T-10154	11.835.411.1590	Z4545	Swirl Gas Cap 4.5	1	13.	T-8640	10.505.946		O-Ring	1
3.	T-8635	11.835.201.160	Z3004	Nozzle Cap 0.4	1	14.	N-10040	10.505.916		O-Ring	1
	T-8636	11.835.201.162	Z3008	Nozzle Cap 0.8	1	15.	T-8654	11.835.221.100		Torch Body, Machine	1
4.	T-8625	11.835.221.406	Z2006	Nozzle 0.6 25A	5	16.	T-10282	11.842.221.100-10		Tube Adaptor	1
	T-8626	11.835.221.407	Z2007	Nozzle 0.7 35A	10	17.	T-9857	11.842.421.250		Tube D44-295	1
	T-8627	11.835.221.408	Z2008	Nozzle 0.8 50/60A	10	NS	T-10164	11.843.001.810 OEM		Nozzle Tool	1
	T-8628	11.835.221.410	Z2010	Nozzle 1.0 80/90A	10	NS	T-10163	11.835.221.820 OEM		Cathode Tool	1
	T-8929	11.835.221.411	Z2011	Nozzle 1.1 90/100A	10	NS	T-9755	11.835.201.077		Clamping Bush	1
	T-8629	11.835.221.412	Z2012	Nozzle 1.2 100A	10	NS	T-9756	11.835.201.076		Outer Bush	1
	T-8637	11.835.221.414	Z2014	Nozzle 1.4 130A	10	NS	KT-1203	11.838.221.1015		PerCut® 101-2 Torch with Leads 1.75m	1
	T-8651	11.835.421.412	Z2112	Nozzle 1.2 100A	10	NS	KT-1185	11.838.421.700		PerCut® 101-1 Cable Leads 6m	1
	T-8652	11.835.421.414	Z2114	Nozzle 1.4 130A	10	NS	KT-1135	11.838.421.702		PerCut® 101-1 Cable Leads 15m	1
NS	T-10417	11.835.411.614 OEM	Z2514	Nozzle 1.4 120A	1	NS	KT-1410	11.838.221.103		PerCut® 101-2 Torch with Leads 3m	1
NS	T-10054	11.835.411.616 OEM	Z2516	Nozzle 1.6 130A	1	18.	Coolant Liquid. Details on the page 152, section Accessories.				
5.	T-8623	11.835.221.153	Z101	Swirl Ring 0.4 (3×CW)	1						
	T-8886	11.835.221.154	Z102	Swirl Ring 0.4 (2×CW)	1						
6.	T-9287	11.834.321.153K	Z111	Swirl Ring, Ceramic	1						
	T-8618	11.834.321.153	Z111	Swirl Ring, Vespel	1						

(i) THIS PART MAY NOT BE DISTRIBUTED ON THE GERMAN, ITALIAN, FRENCH AND GREAT BRITAIN MARKET. THERMACUT ACCEPTS NO RESPONSIBILITY IN CASE OF INDIRECT SALES TO GERMANY, ITALY, FRANCE AND GREAT BRITAIN.

**NS** NOT SHOWN IN THE PICTURE

**-PRO** TECHNOLOGY OF SILVER INSERTED COPPER ELECTRODE BODY, WHICH SIGNIFICANTLY DECREASES ELECTRODE COSTS WITH SIMILAR WORK PERFORMANCE COMPARED TO FULL SILVER ELECTRODES.

**Last update of this page: 11/11/2018. See Revision history for details.**

**THERMACUT®**  
THE CUTTING COMPANY

WWW.THERMACUT.CZ  
TEL.: +420 556 423 418  
SALES@THERMACUT.CZ

WWW.THERMACUT.DE  
TEL.: +49 (0) 27 39 40 33 0  
INFO@THERMACUT.DE

WWW.THERMACUT.COM  
TEL.: 1-603-542-6715  
CUSTOMERSERVICE@THERMACUT.COM

THERMACUT®, THE CUTTING COMPANY®, FHT-EX®, EX-TRAFIRE®, EX-TRACK®, EX-TRABEAM® AND EX-TRAFAME® ARE REGISTERED TRADEMARKS OF THERMACUT, K.S. AND MAY BE REGISTERED IN CZECH REPUBLIC AND/OR OTHER COUNTRIES. ALL OTHER TRADEMARKS ARE PROPERTIES OF THEIR RESPECTIVE OWNERS. THERMACUT IS NO WAY AFFILIATED WITH KJELLBERG®.  
MOST THERMACUT PARTS ARE MADE FOR OR BY AN IBG COMPANY. PARTS INDICATED WITH A OEM ARE ORIGINAL PARTS MANUFACTURED BY THE ABOVE NAMED MANUFACTURER AND ARE BEING RESOLD BY THERMACUT. THERMACUT RESERVES THE RIGHT TO SUBSTITUTE OEM PARTS IN PLACE OF THERMACUT PARTS.  
VALID FROM NOVEMBER 2020 • PREVIOUS VERSION IS NO LONGER VALID. • © COPYRIGHT 2020 BY THERMACUT® CZECH REPUBLIC. ALL RIGHTS RESERVED.